

Racing Administration Service

www.hri-racing.ie

rás

RACING ADMINISTRATION SERVICE



HORSE RACING
IRELAND

- 1 → Home
- 2 → Race Meetings
- 3 → Ground Reports
- 4 → Race Status
- 5 → Trainer Information
- 6 → Rider Information
- 7 → Race Information
- 8 → Calendar Registrations
- 9 → Official Handicap Ratings
- 10 → HRI Directives & Ballot Rules
- 11 → Trainer Forms & Information
- 12 → Frequently Asked Questions
- 13 → Racecourse Contacts
- 14 → Contact Us

LATEST NEWS

In accordance with Directive 10(iii) the following horses have lost their Provisional Ballot Status and will be the first to be balloted out of race

212E BELLEWSTOWN 17-AUG-11

Lougher Stables H'cap
Bubbly Bellini 007
Desert Ben 008

In accordance with Directive 10(iii) the following horses have lost their Provisional Ballot Status and will be the first to be balloted out of race

212C BELLEWSTOWN 17-AUG-11

[VIEW ALL NEWS](#)

1 TURF

- Make Entries
- Declarations
- Book Riders online

15

2 RACE

View Race Information online

16

Minitel Charges:
TURF Service 9c per min.
RACE Service 28c per min.

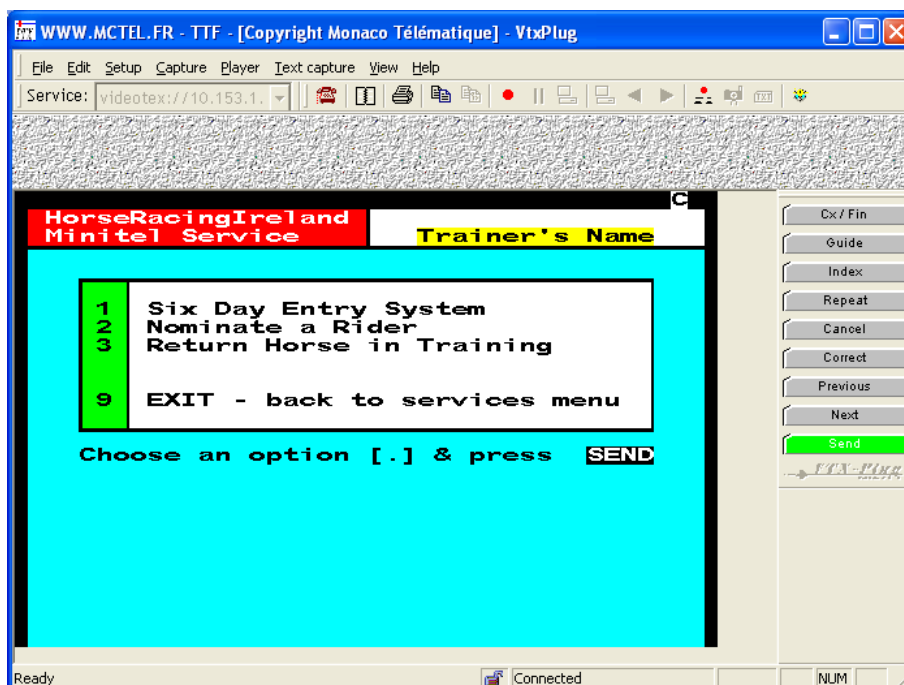
- 1) Returns user to the main home page.
- 2) Lists of released entries, declarations, forfeits etc.
- 3) Issued ground reports for upcoming Irish meetings.
- 4) Declaration & Entry Status provide regular updates on races closing that day.
- 5) Lists all licensed Irish trainers including their contact details if available.
- 6) Lists all licensed Irish riders including min weight, wins, claims, agent & suspensions.
- 7) Race Programmes, Provisional Summaries & Fixture Lists.
- 8) Weekly registrations including naming, colours, hunter cert etc.
- 9) Official handicap ratings and weekly ratings amendments.
- 10) Full list of HRI Directives and an easy to use guide to the Balloting System.
- 11) Includes Trainer & Owner forms, race qualifications info and Press Releases.
- 12) FAQs and answers relating to the Racing Department and Client Accounts.
- 13) Racecourse contact details.
- 14) Contact information for the individual departments in Horse Racing Ireland.
- 15) Link to making Entries, Declarations & Booking Riders online
- 16) Link to viewing Race Information.

Guide to using RÁS – Racing Menu:



1. Make Entries, Declarations, Book Riders and Return Horses In/Out of Training on-line:

The following menu will open up:

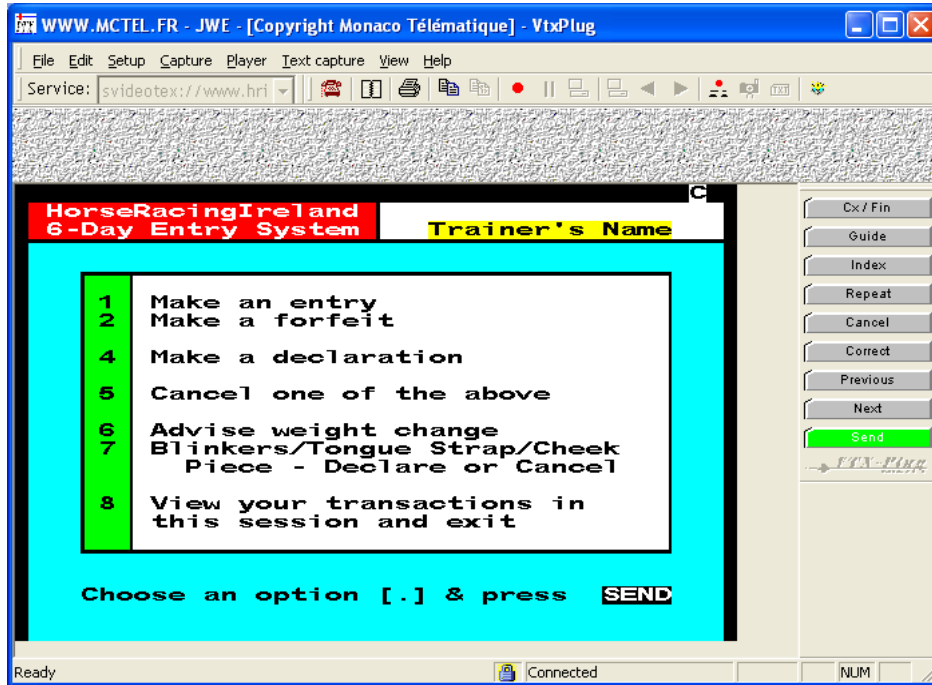


- Please select **1** to continue in the **Entry System**
- Please select **2** to **Nominate a Rider**
- Please select **3** to **Return Horses In/Out of Training**

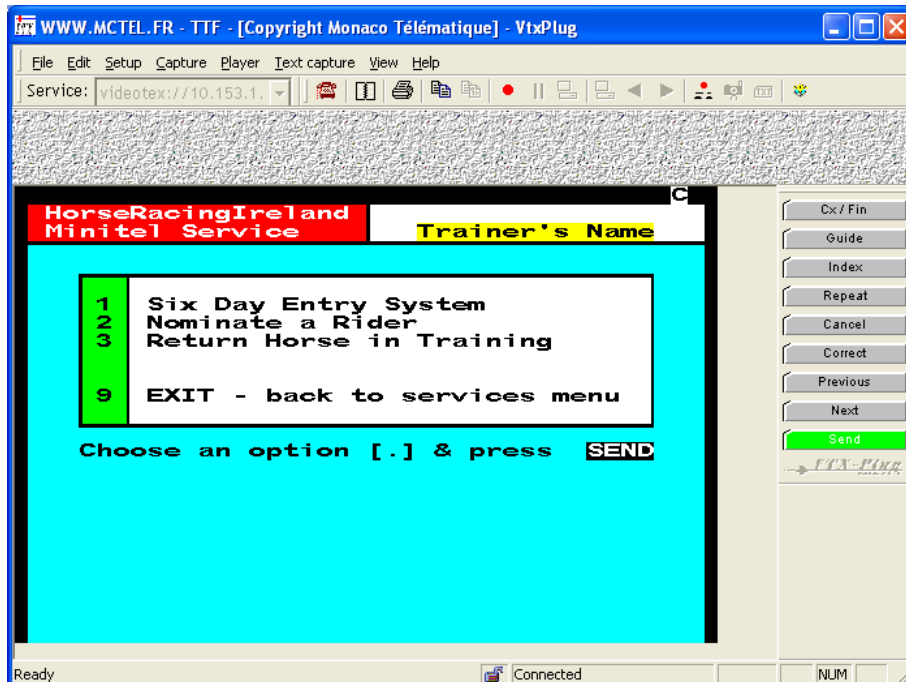
To make a selection you can either:

- Use your mouse to click on the number of your selection
- Key in the number of your selection on the keyboard and press return

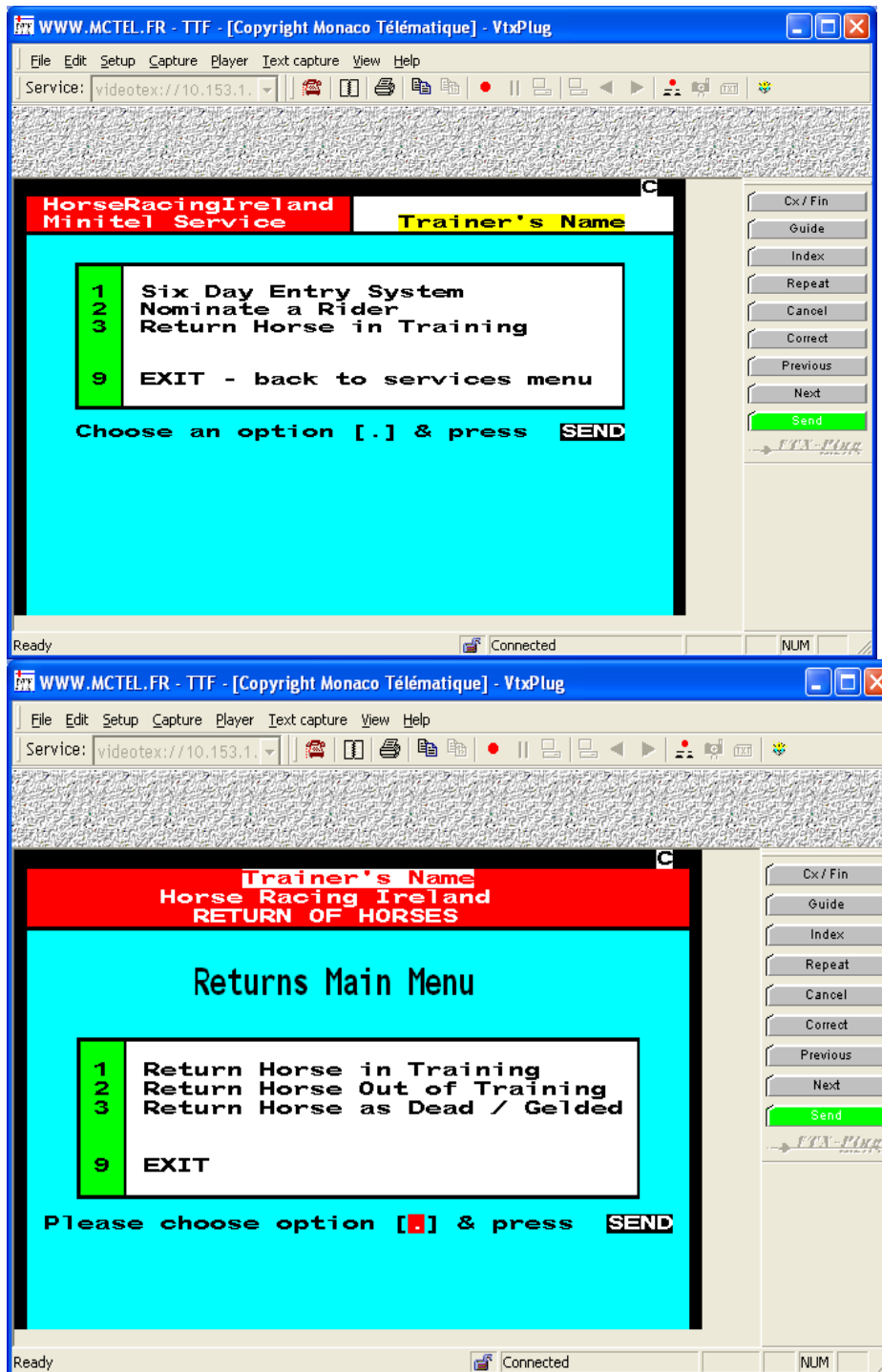
1. Entry System Menu: This section will guide you step by step through the Entry System.



2. Nominate a Rider: This section will guide you step by step through the process of nominating a rider.



3. Return Horse In/Out of Training on-line: The following interactive session will bring you step by step through the process of returning your horse in/out of training. Each question should be read carefully.



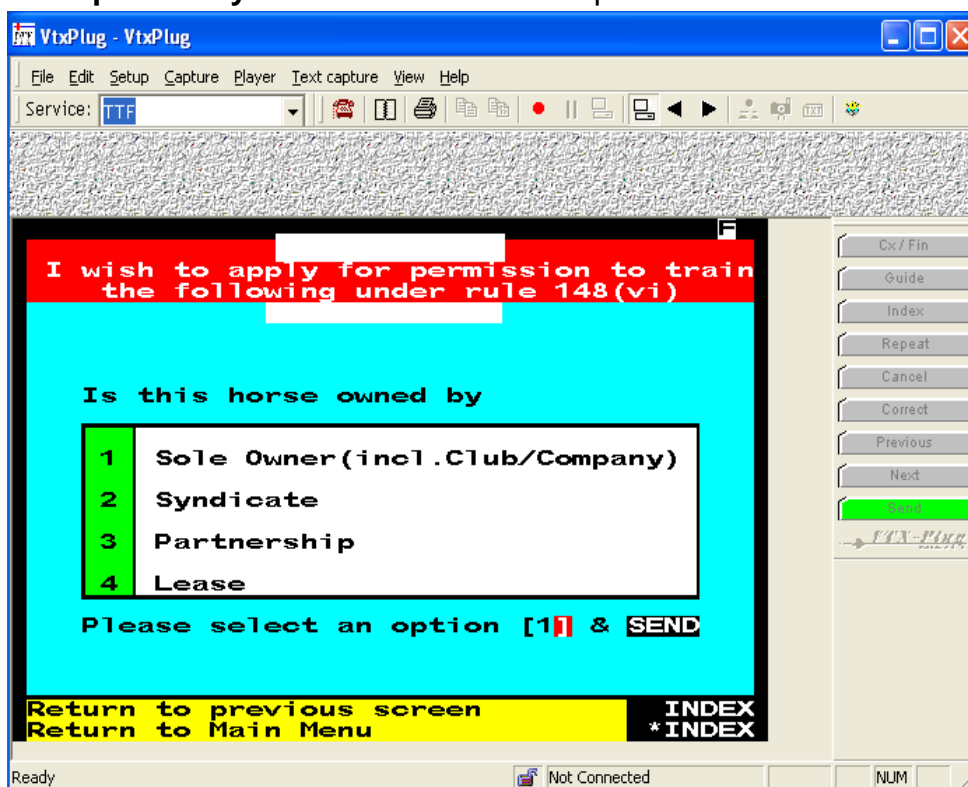
Please be aware of the following IMPORTANT NOTES:

1) Details of the horse: You will need full details of the horse (N.B.from passport)

- name
- country of foaling
- sex
- age

2) Horses that have run outside Ireland since last returned (if ever): These returns MUST be made directly to the Registrations Section on the appropriate forms, including a FULL list of performances.

3) Details of Ownership: Within this section it is **VERY IMPORTANT** to enter correct information as mistakes here could lead to the horse being returned in training under the wrong ownership. N.B. We must emphasise that it is the **trainer's responsibility** to ensure that all details provided are correct.



4) Syndicates/ Partnerships/Leases: Horses returned in training under the ownership of a syndicate/partnership/lease will only be accepted if the appropriate forms have been registered with Horse Racing Ireland.

5) Change in Ownership: can only be accepted if there are no Race Engagements pending.

6) Notification of Horses as Gelded or Dead: can only be accepted if the user is the current or last known trainer of the horse.

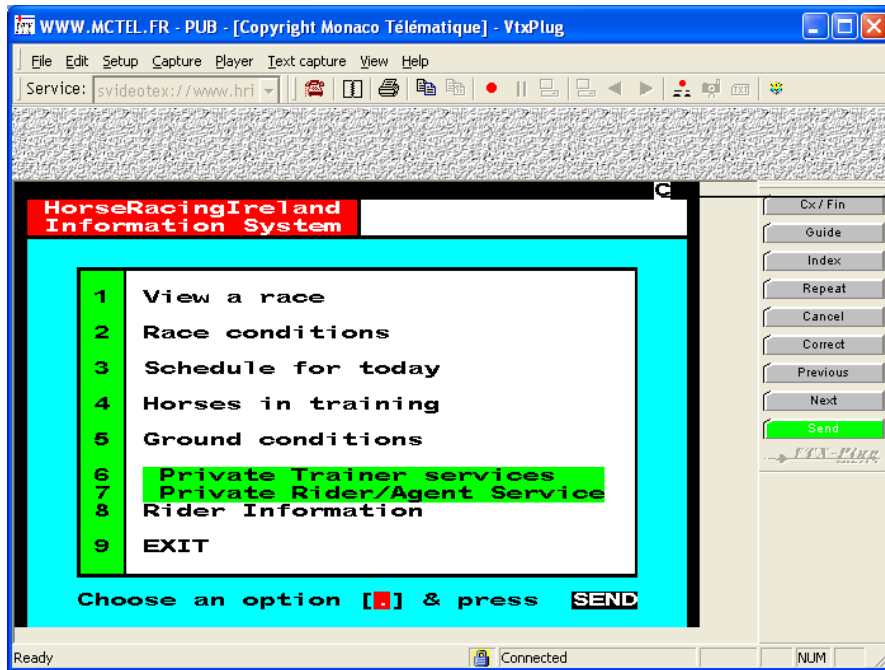
7) Horses named within the last seven days: Entries for horses named within the last seven days will be accepted on the following Monday.

If at any stage during the process of returning your horse in/out of training the information given is not compatible with Horse Racing Ireland records then the program will not let you proceed. You will be notified of the particular query (e.g. Syndicate Query) and you must try again with the correct details or contact the Registrations Section.

At the end of every session the user must view all the transactions and then exit. This is confirmation that the horse has been returned in/out of training. Entries can be made thereafter with the one exception of horses that have been named within the last seven days (see note above).



2. View Race Information on-line:



Indicating connection to minitel system. See note below.

To make a selection you can either:

- Use your mouse to click on the number of your selection
- Key in the number of your selection on the keyboard and press return

Important Note:

To exit from each menu it is important that you select "Exit" from the menu and wait until the connection is dropped (the small "c" on the top right hand corner of screen will change to "f") before closing out of this screen and going back to the home page.